

THCN

THCN PTE. LTD.

THCN
www.thcnwatches.com


ABOUT US

At THCN, our passion lies in creating exquisite watches exclusively designed for women.

We take pride in offering affordable timepieces, ensuring that the luxury of wearing beautiful watches and jewelry is accessible to everyone.

THCN was conceived with the goal of enabling every woman to relish her own moments of joy and contentment through our thoughtfully crafted creations. Our commitment is not just about providing watches; it's about crafting experiences that celebrate the uniqueness of every woman.

Join us in embracing affordable luxury, where each watch tells a story and becomes a cherished part of your individual journey.

A photograph of four young women posing together. Two are standing in the back, and two are sitting in the front. They are all smiling and looking towards the camera. They are wearing various styles of watches. The woman on the far left is wearing a gold watch with a round face. The woman on the far right is wearing a gold watch with a rectangular face. The woman in the middle front is wearing a gold watch with a round face. The woman on the far right is wearing a gold watch with a round face. They are all wearing white blouses or dresses. The woman on the far left is wearing a denim dress. The woman on the far right is wearing a white dress. The background is a plain, light-colored wall.

These individuals, namely **Tonya, Hebe, Caroline,** and **Nana**, decided to name the brand after their initials as an ode to their **abilities, camaraderie,** and shared **aspirations.**



THCN

OUR VISION

We aim to be globally recognised as a symbol of timeless elegance and individuality, where each watch represents a unique personality and serves as a symbol of self-expression.

OUR MISSION

Sharing our passion for individuality and empowerment with the world.

THCN

OUR BRAND VALUES

WE BELIEVE
IN SELF-EXPRESSION

WE BELIEVE
IN EMPOWERMENT

WE BELIEVE
IN CELEBRATING INDIVIDUALITY

WE BELIEVE
IN EMBRACING INNOVATION

THCN

OUR BRAND VOICE

EMPOWERING

We speak with a voice that encourages and uplifts. We empower individuals to embrace their distinctiveness and express themselves freely.

ELEGANT

Our communication reflects the timeless elegance of our watches. We choose words that are refined, sophisticated, and convey a sense of beauty.

INSPIRATIONAL

We inspire our audience to see their watches as more than timekeepers but as symbols of personal identity and style. Our words motivate and stir a sense of self-discovery.

INCLUSIVE

Our brand voice is inclusive and welcoming. We celebrate diversity and recognize the unique stories that each individual brings to our community.

PASSIONATE

Our passion for individuality is evident in every word we choose. We speak with enthusiasm and conviction, sharing the excitement we feel for our products and the stories they tell.

CUSTOMER-CENTRIC

Above all, our brand voice is attentive to our customers' needs. We listen, engage, and respond with empathy, building meaningful connections with the individuals who choose THCN.

Meaning of T H C N

**T H
C N**



TONYA

Elegance and Strength



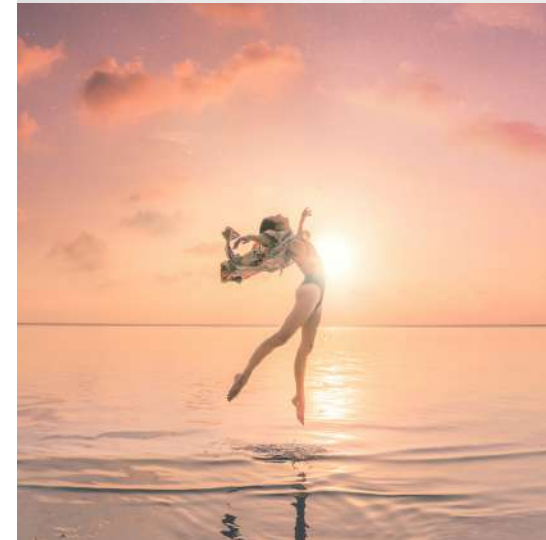
HEBE

Tenacity and Wisdom



CAROLINE

Charismatic and Vitality



NANA

Confidence and Courage

OUR DESIGN

Passion and Empowerment

THCN is designed to **empower** every woman to savor moments of joy and confidently pursue their **dreams**.

MOVEMENT

We use watch movements from both Miyota (Japan) and Ronda (Swiss). Our watches use quartz movements that utilise an oscillating quartz crystal that vibrates at a specific frequency for precise timekeeping.

GOLD PLATING

We employ an ion-plating technique, known for its reduced environmental impact compared to traditional plating methods. In this process, the watch is positioned within a vacuum chamber, where the surface undergoes bombardment with gold particles, resulting in the application of a thin layer of solid gold coating.

CASE MATERIALS

Our watches utilise surgical-grade stainless steel as the case material, known for its high tensile strength and strong corrosion resistance.



THCN

COLLECTIONS SHOWCASE

TONYA COLLECTION



TONYA series utilizes meticulously crafted **T-Lug** design to accentuate the exceptional **grace** and **fortitude** of women.

Embrace your personal flair in an unparalleled manner.

HEBE COLLECTION



HEBE series boasts a sleek overall shape resembling the letter "H", emphasizing the **contemporaneity** of the timepiece while radiating traits synonymous with **femininity** such as **refinement**, **resilience** and **sagacity**.

CAROLINE COLLECTION



CAROLINE
series, its **C-**
shaped derived lug
design ingeniously
blends **classic**
motifs with
modern
aesthetics that
underscore
women's **unique**
vitality.

NANA COLLECTION



NANA series replaces conventional "n" typography with a **pigeon egg** diamond contour which creates an **exclusive** visual effect. It incorporates **innovative** elements replete with personality that symbolize women's **boldness** and **valor**.



Elegance and Strength



Tenacity and Wisdom



Charismatic and Vitality



Confidence and Courage

TONYA COLLECTION



Case material: Stainless Steel
Case size: 28 x 34mm
Case thickness: 8mm
Glass: Mineral with sapphire coating
Stone: Zirconia 124pcs
Strap material: Genuine Leather
Strap width: 12 x 10mm
Movement: Miyota 2035 quartz
Water resistance: 3 ATM
RRP: SGD139/HKD819/USD105/
EUR95

TONYA series utilizes meticulously crafted T-Lug design to accentuate the exceptional **grace** and **fortitude** of women.
Embrace your personal flair in an unparalleled manner.

HEBE COLLECTION



Case material: Stainless Steel
Case size: 22 x 34mm
Case thickness: 7mm
Glass: Mineral with sapphire coating
Stone: Zirconia 84pcs
Strap material: Stainless Steel
Strap width: 12mm
Movement: Miyota 2025 quartz
Water resistance: 3 ATM
RRP PVD: SGD149/HKD869/USD105/
EUR95

HEBE series boasts a sleek overall shape resembling the letter "H", emphasizing the **contemporaneity** of the timepiece while radiating traits synonymous with **femininity** such as **refinement**, **resilience** and **sagacity**.

CAROLINE COLLECTION



Case material: Stainless Steel
Case size: 22 x 34mm
Case thickness: 7mm
Glass: Mineral with sapphire coating
Stone: Zirconia 40pcs
Strap material: Stainless Steel
Strap width: 10mm
Movement: Miyota 2025 quartz
Water resistance: 3 ATM
RRP: SGD 129/HKD 759/USD 99/
EUR 89

CAROLINE series, its C-shaped derived lug design ingeniously blends classic motifs with modern aesthetics that underscore women's unique vitality.

NANA COLLECTION



Case material: Stainless Steel
Case size: 18 x 23mm
Case thickness: 6mm
Glass: Mineral with sapphire coating
Stone: Zirconia 134pcs
Strap material: Stainless Steel
Strap width: 8.5 x 4mm
Movement: Seiko VC00 quartz
Water resistance: 3 ATM
RRP: SGD 159/HKD 929/USD 119/
EUR 109

NANA series replaces conventional "n" typography with a **pigeon egg** diamond contour which creates an **exclusive** visual effect. It incorporates **innovative** elements replete with personality that symbolize women's **boldness** and **valor**.

RETAIL LOCATIONS

SINGAPORE

Paya Lebar Quarter (PLQ) Mall

10 Paya Lebar Road, #02-22, PLQ Mall, Paya Lebar Quarter, Singapore 409057

Design Orchard

250 Orchard Rd, Design Orchard, Singapore 238905

Bugis Junction

200 Victoria St, #LI-KIO-07, Bugis Junction, Singapore 188021, 188021

Jewel Changi Airport

78 Airport Blvd, #BI-251, Jewel Changi Airport, Singapore 819666

OG People's Park

100 Upper Cross St, Singapore 058360

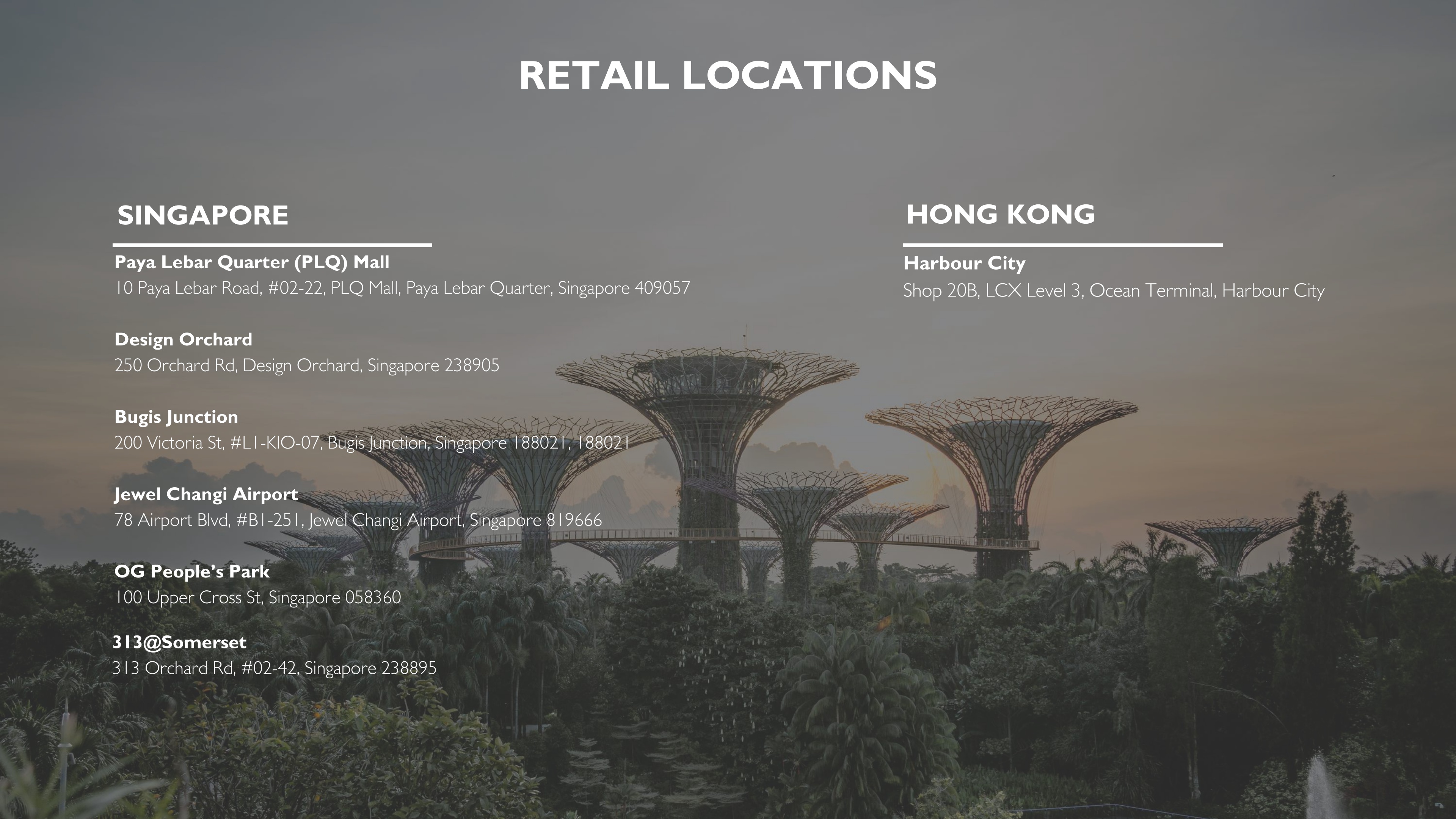
313@Somerset

313 Orchard Rd, #02-42, Singapore 238895

HONG KONG

Harbour City

Shop 20B, LCX Level 3, Ocean Terminal, Harbour City



OUR DISPLAY





**WE ARE LOOKING FOR LIKE-MINDED PARTNERS
TO JOIN US IN THIS JOURNEY**

THANK YOU

CONTACT US

10 Ubi Crescent #06-90, Lobby E, Ubi Techpark
Singapore 408564

(+65) 6908 6897

EMAIL: info@thcnwatches.com

THCN

THCN PTE LTD