



LUNATICA

ROMA

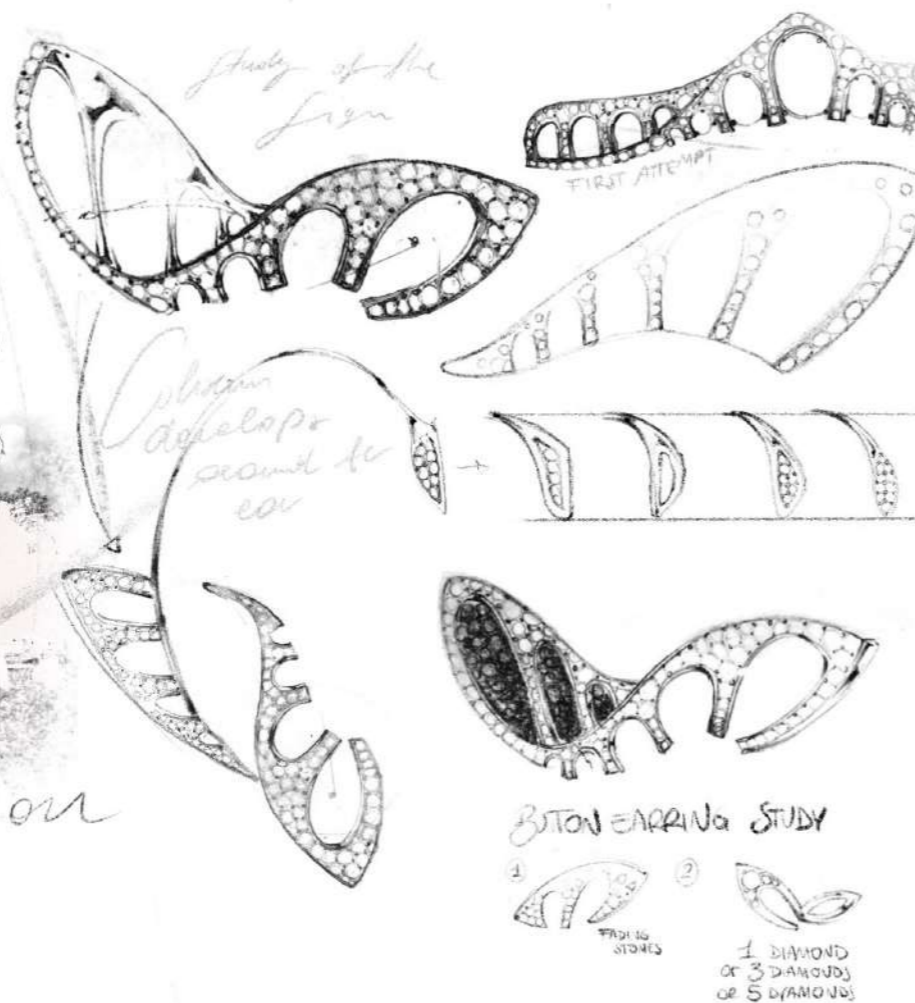
COLOSSEA


Finalist
Inhorgenta Award 2023


LUNATICA
ROMA

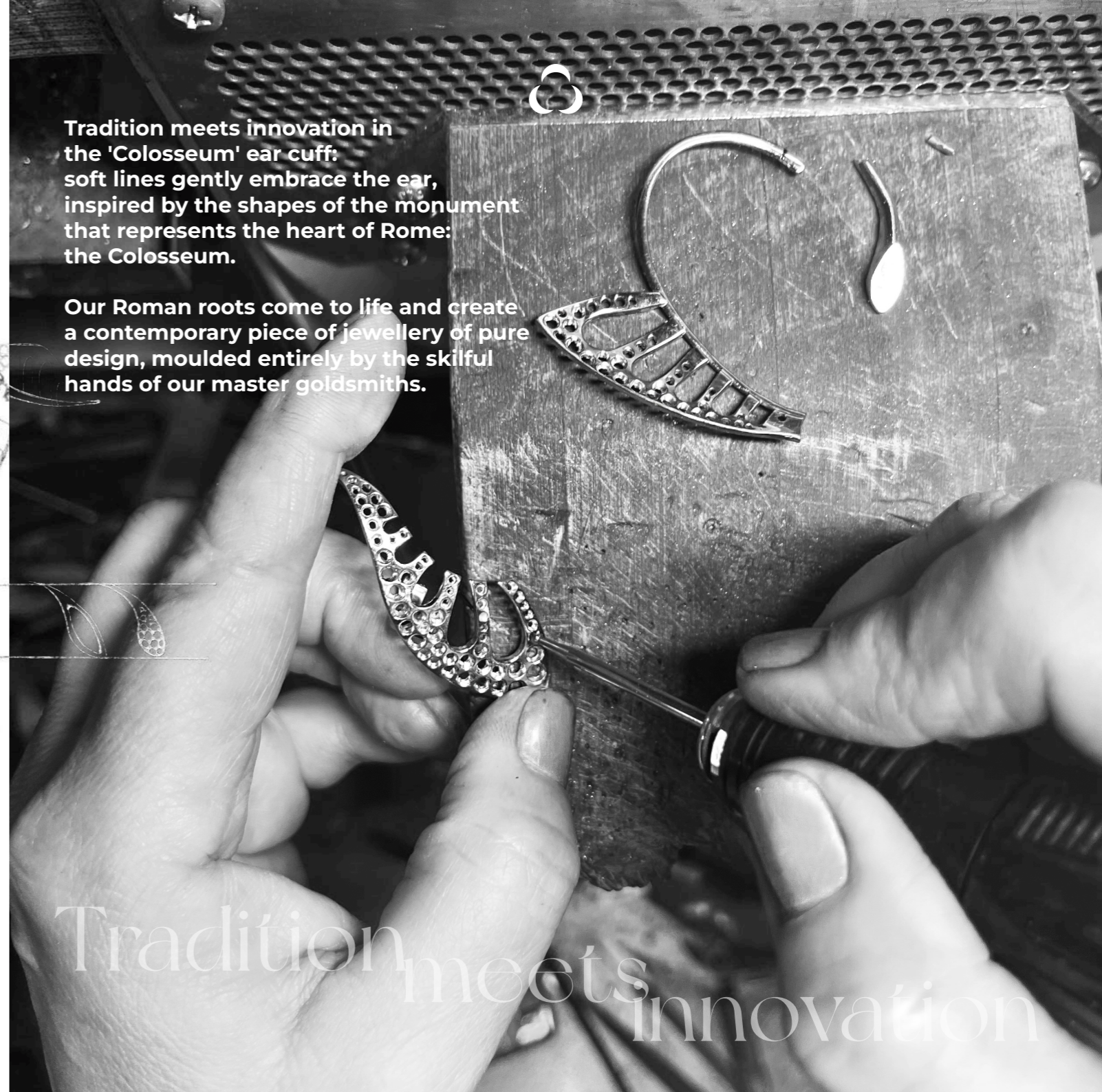


Inspiration




Tradition meets innovation in the 'Colosseum' ear cuff: soft lines gently embrace the ear, inspired by the shapes of the monument that represents the heart of Rome: the Colosseum.

Our Roman roots come to life and create a contemporary piece of jewellery of pure design, moulded entirely by the skilful hands of our master goldsmiths.



Tradition meets innovation

LUNATICA
ROMA

LUNATICA
ROMA



COLOSSEA

FINALIST
INHORGENTA
AWARD 2023

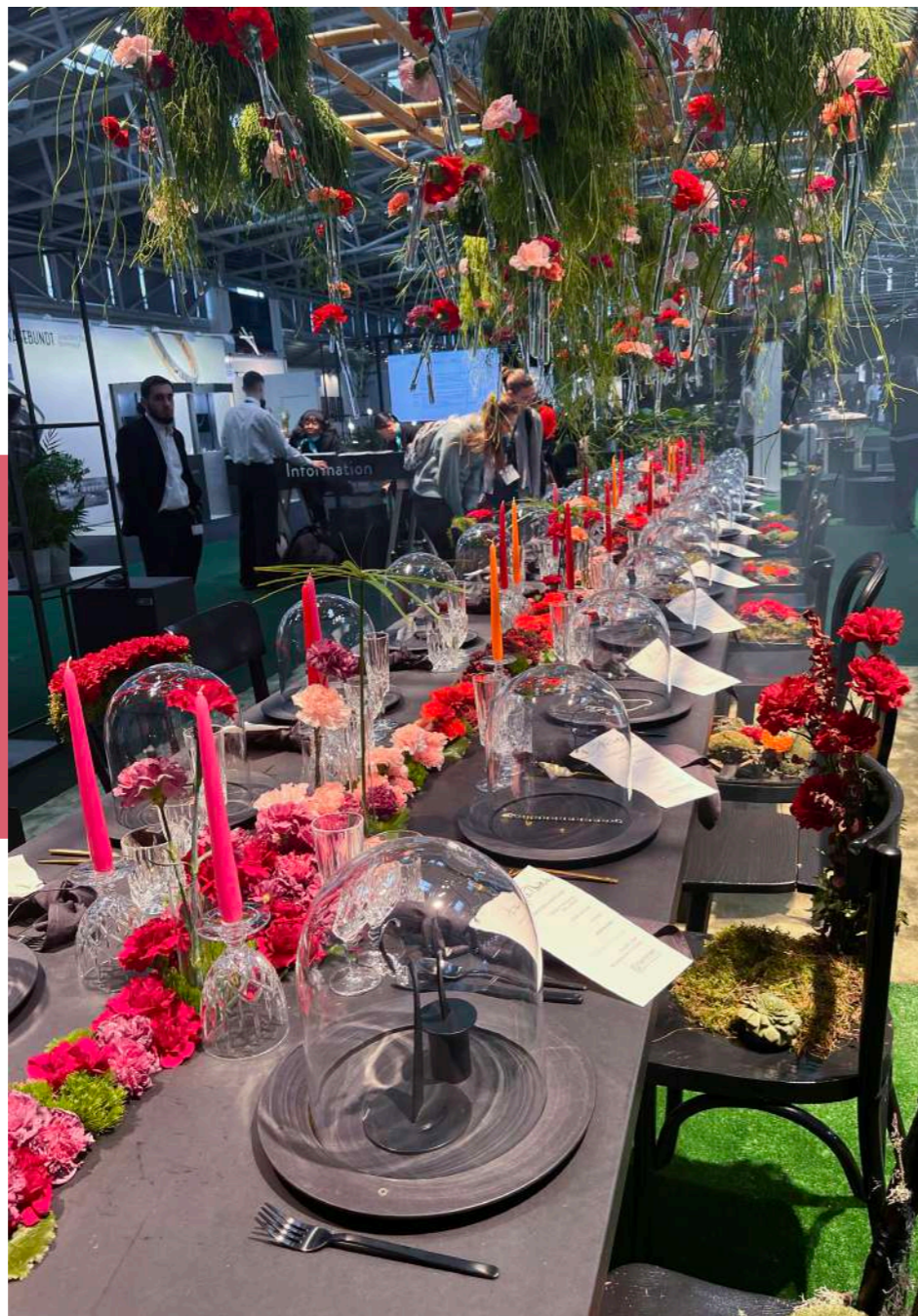





LUNATICA
ROMA



Tradition
becomes
excellence




LUNATICA
ROMA





LUNATICA

ROMA

tradition becomes excellence