



LUNATICA

ROMA

COLOSSEA

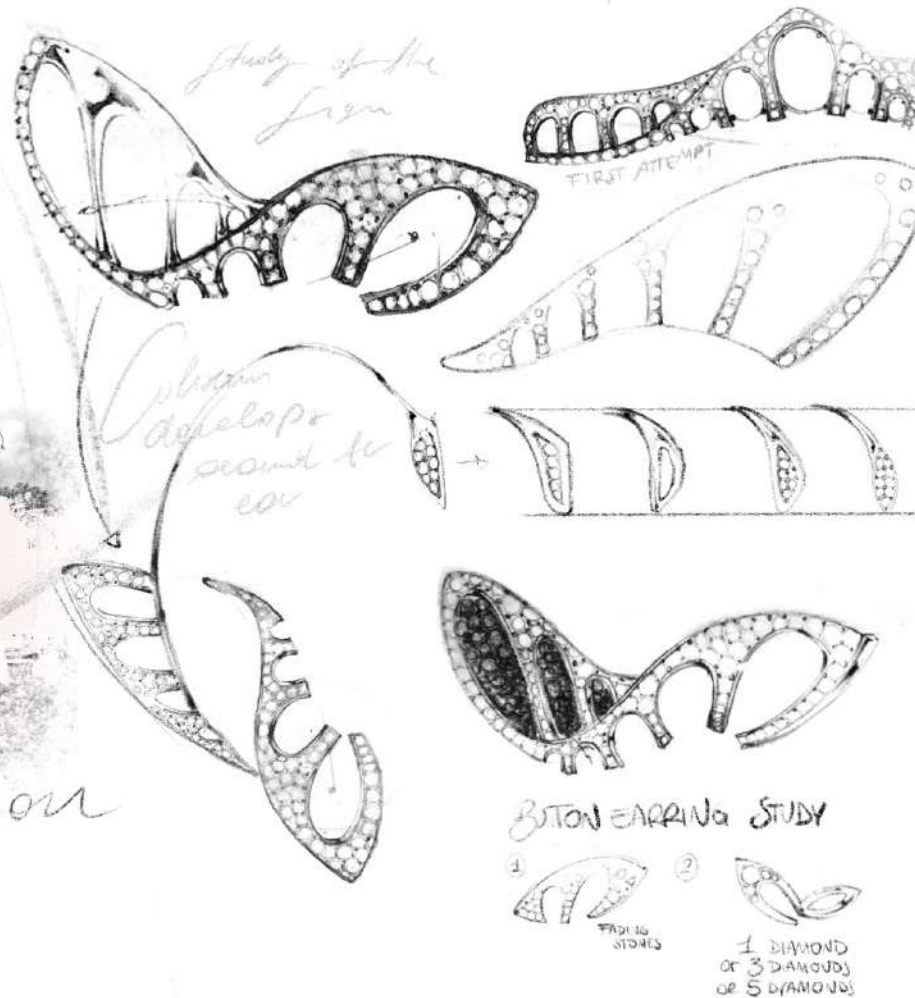
Finalist

Inhorgenta Award 2023

LUNATICA
ROMA



Inspiration



Tradition meets innovation in the 'Colosseum' ear cuff: soft lines gently embrace the ear, inspired by the shapes of the monument that represents the heart of Rome: the Colosseum.

Our Roman roots come to life and create a contemporary piece of jewellery of pure design, moulded entirely by the skilful hands of our master goldsmiths.



Tradition meets innovation

LUNATICA
ROMA

LUNATICA
ROMA



FINALIST
INHORGENTA
AWARD 2023

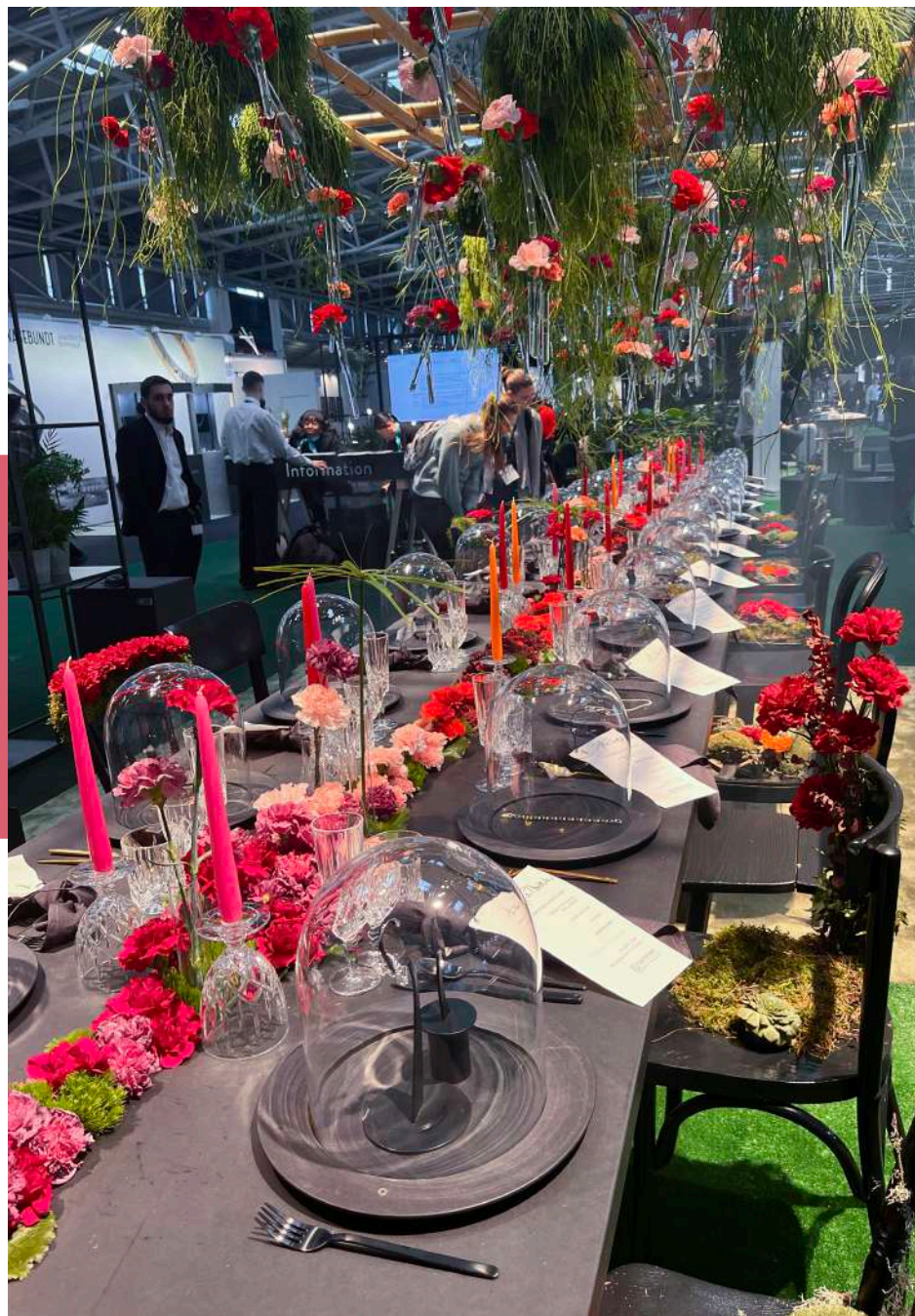


COLOSSEA




LUNATICA
ROMA

Tradition
becomes
excellence






LUNATICA
ROMA





LUNATICA

ROMA

t r a d i t i o n b e c o m e s e x c e l l e n c e