



SPRING SUMMER 2026

SIF JAKOBS  
JEWELLERY



# SS26

## A Season of Light, Shape and Modern Elegance


For Spring Summer 2026, we welcome the season with dynamic sculptural designs, reimagined classics, soft pastels, and bold new statements across some of our most beloved collections.

**Ellera Waves** evolves with new fluid profiles, while **Borsa** introduces bold new statement earrings inspired by modern icons.

**Spirale** continues its story of movement and transformation, and **Sardinien** returns with renewed softness and colour in beautiful pastel tones.

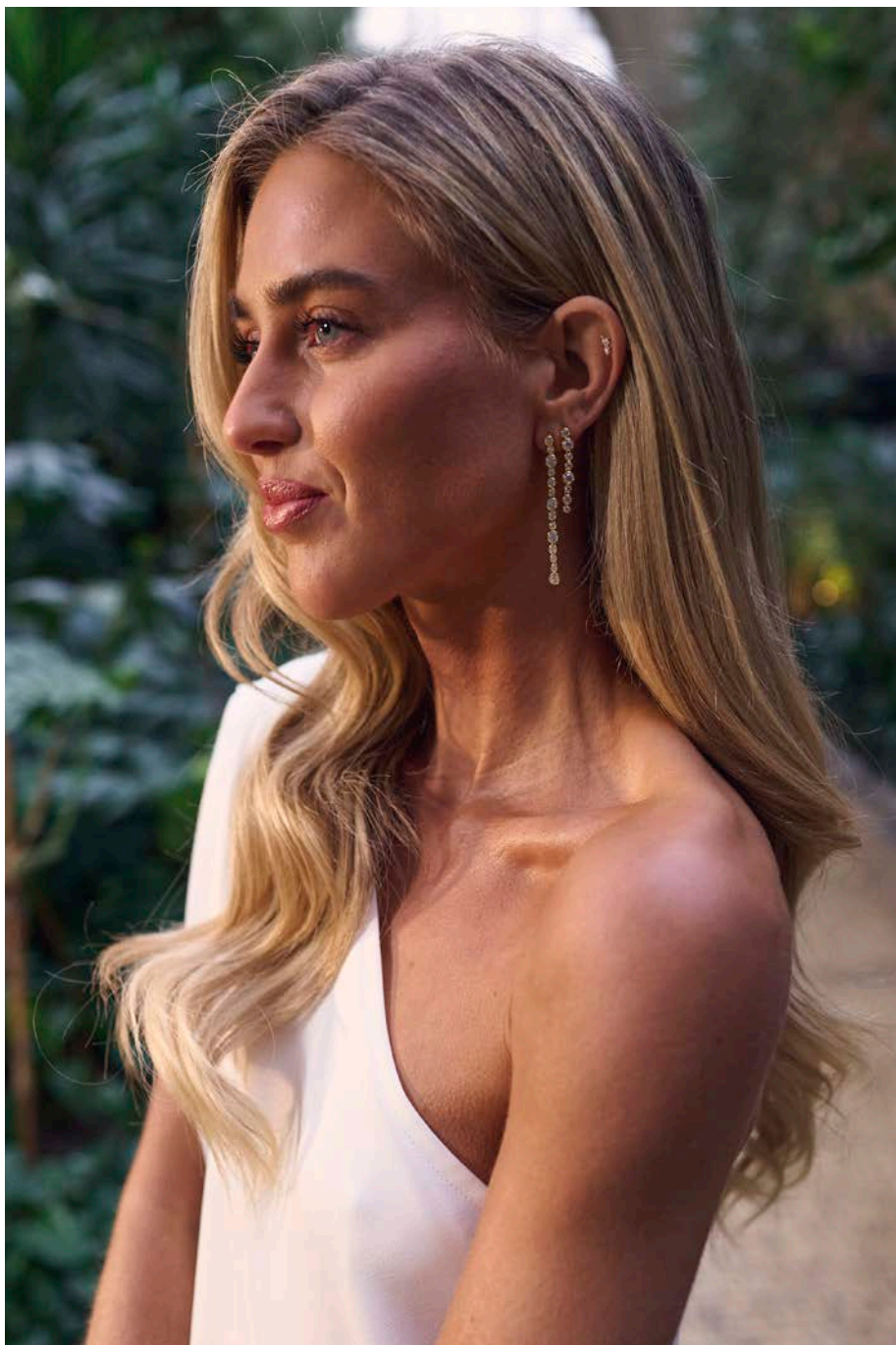
**Riva** expands with modern vintage glamour, **Como** delivers pure minimalism in high polish, and **Bormio** brings playful shapes with strong attitude.

**Savona** adds architectural structure through sculptural chains, **Asola** introduces a delicate summer anklet, and **Isabella** completes the season with a new, elegant timepiece.



*“With SS26, I wanted to capture the feeling of light in motion the way jewellery reflects, flows and becomes part of who you are. I am endlessly inspired by nature, architecture and the quiet beauty of everyday details. This collection is about elegance that feels effortless, shapes that feel alive, and jewellery that feels personal and empowering.”*

*Jit Juhaby*



# Sardinien

A beloved classic, Sardinien returns with a fresh, modern expression of its signature bezel setting. New oval cuts, soft colour combinations, and refined compositions bring a contemporary twist to the collection's clean, feminine lines.

From petite everyday pieces to eye-catching statements, each design features sparkling cubic zirconia framed in the classic bezel setting for a look that is both secure and effortlessly elegant. Soft pastel tones add a light, summer-ready touch, making Sardinien SS26 a celebration of simplicity, colour, and timeless sophistication.





SS26

Presented by our campaign model, Emili Sindlev









# SARDINIEN

*Silver*



# SARDINIEN

*Gold*





# Sardinien

*in pastel*

Seasonal shades add a confident touch of colour to any outfit, giving Sardinien SS26 a fresh, modern lift while staying true to its timeless elegance.







*Pastels with Presence*







# Sardinien Ovale

Featuring a stunning oval-cut stone in a rich dark pink hue, this new Sardinien style adds a fresh, light-filled expression to the collection. Feminine, modern and wildly eye-catching.



# SARDINIEN OVALE



# Ellera

Ellera Waves evolves for SS26 with new designs that highlight its signature fluidity through mirror polished surfaces and softly sparkling stones. The new pieces bring a fresh, refined dimension to the collection, inspired by the movement of light on water.



*Polished, Playful, and Effortlessly Refined*

# ELLERA WAVES ALTRO



# Borsa

Inspired by the aesthetics of iconic IT bags, Borsa embodies refined versatility and confident style. For SS26, the collection expands with three new earrings including two bold sculptural statement pieces and one sleek everyday stud. The new additions balance contemporary form with a playful edge, staying true to the Borsa attitude.



*The IT Icons*



# BORSA





# Como

Como is our ode to Scandinavian minimalism, defined by clean lines and smooth surfaces. The collection introduces a high polished bangle and matching hoops, a modern combination with timeless appeal. With its sleek finish and understated elegance, Como brings quiet luxury to life.

*Uncomplicated and quietly powerful*



# COMO





# Riva

Inspired by the glamour of 1960s Italian actresses, Riva balances sophisticated elegance with modern vintage charm. The collection expands with a bold ring, bangle and hoops, featuring sculptural detailing and sleek, rhythmic lines. Whether worn alone or layered, the new additions complete the Riva universe with timeless Italian glamour.







*Modern Vintage with Italian Soul*

# RIVA





# Spirale Due

Spirale Due introduces two new earrings and a necklace that reflect movement, growth and transformation through refined, flowing forms.

The collection balances a bold sculptural statement with a more delicate silhouette, capturing the rhythm and gentle curves that define Spirale. Each piece reflects the beauty of subtle movement and continuous evolution.



*Always in Motion*

# SPIRALE DUE



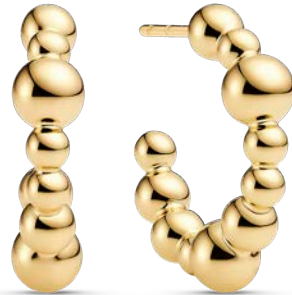
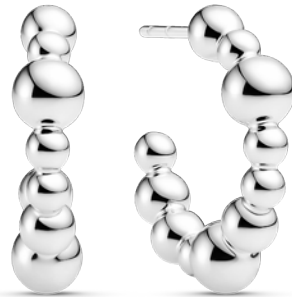
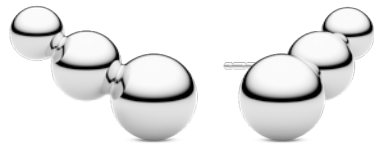
# Bormio

Bormio returns for SS26 with new rings and a smaller version of the popular Bormio hoops, reworking the classic ball shape with a fresh, modern twist. Smooth, rounded forms create jewellery that feels fun, wearable, and perfect for stacking.



*Simple Shapes. Strong Statements.*

# BORMIO





Savona is defined by its square twisted chain and precise geometry. Angled, interlocking links create a subtle, rotating shine with a clean, architectural feel.

# SAVONA



# ASOLA

*A touch of shine to every step!*

Asola is a fine ankle chain crafted with tiny polished links that reflect the rays of the sun beautifully, mirroring the gentle shimmer of how sunlight catches the surface of water.

Simple, airy, and perfect for warm weather styling, adding a touch of shine to every step.





# Isabella

Meet Isabella, our newest watch, featuring rounded edges, a sculpted link bracelet and a soft, graceful silhouette. The Roman numeral dial adds a touch of vintage character, balanced by a clean, contemporary look. Offered in silver and gold, Isabella is designed to elevate every day with effortless elegance.

*“A watch is not just about time.  
It is about confidence, character and presence.  
Something you carry with you, every day.”*

A handwritten signature in black ink, appearing to read 'Jit Johaby'.

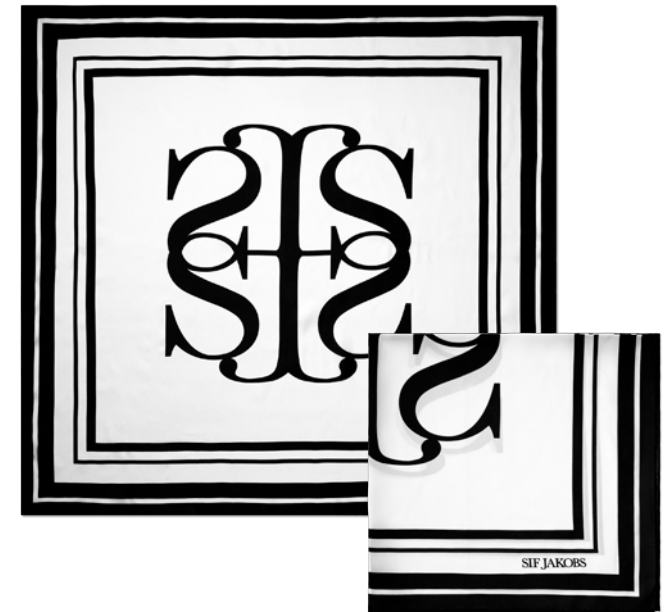
# ISABELLA WATCH

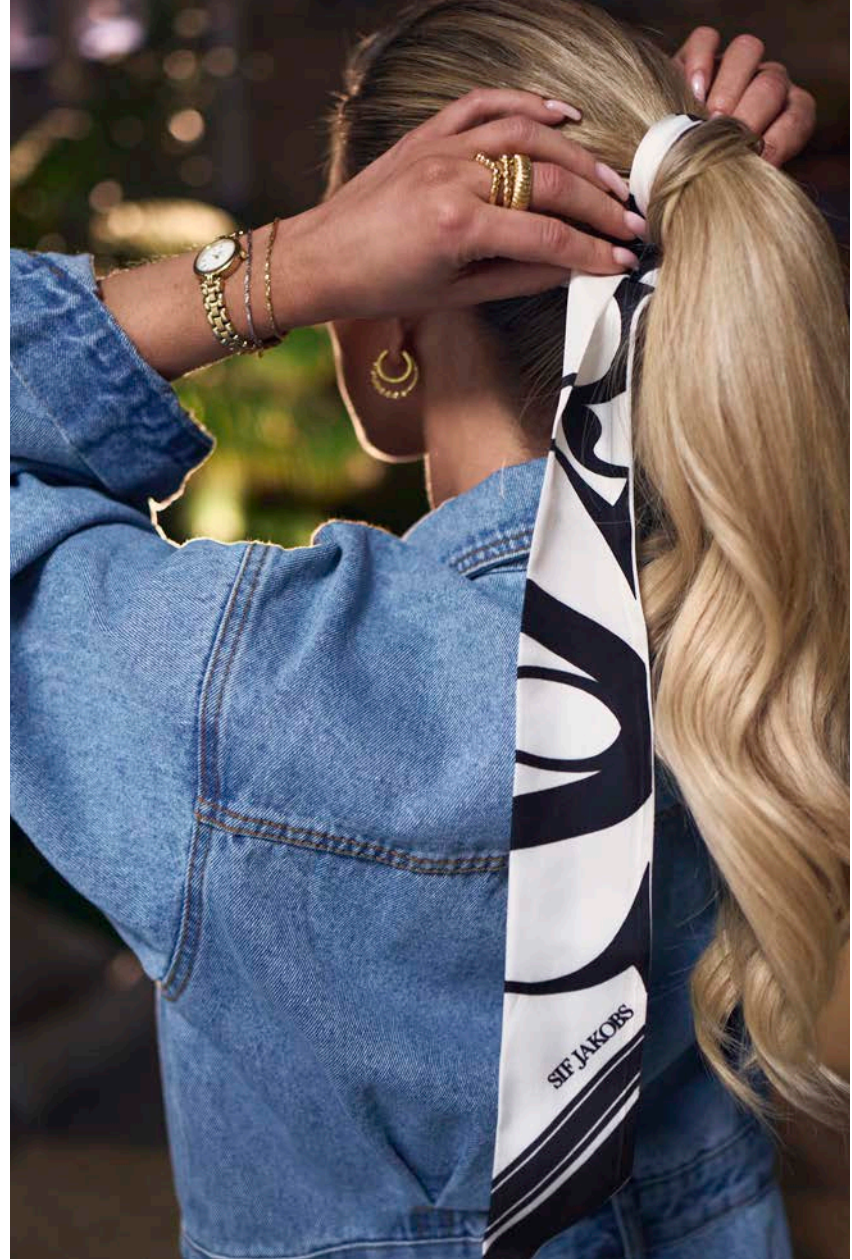




# New Silk Scarfs

Scarf made of 100% silk, featuring a classic black and white frame.





# ACCESSORIES



*Denim Tote Bag*

The perfect tote bags

Designed with smart travel in mind, the back features a convenient sleeve that easily slides over your luggage handle, making it the ideal companion on the go.

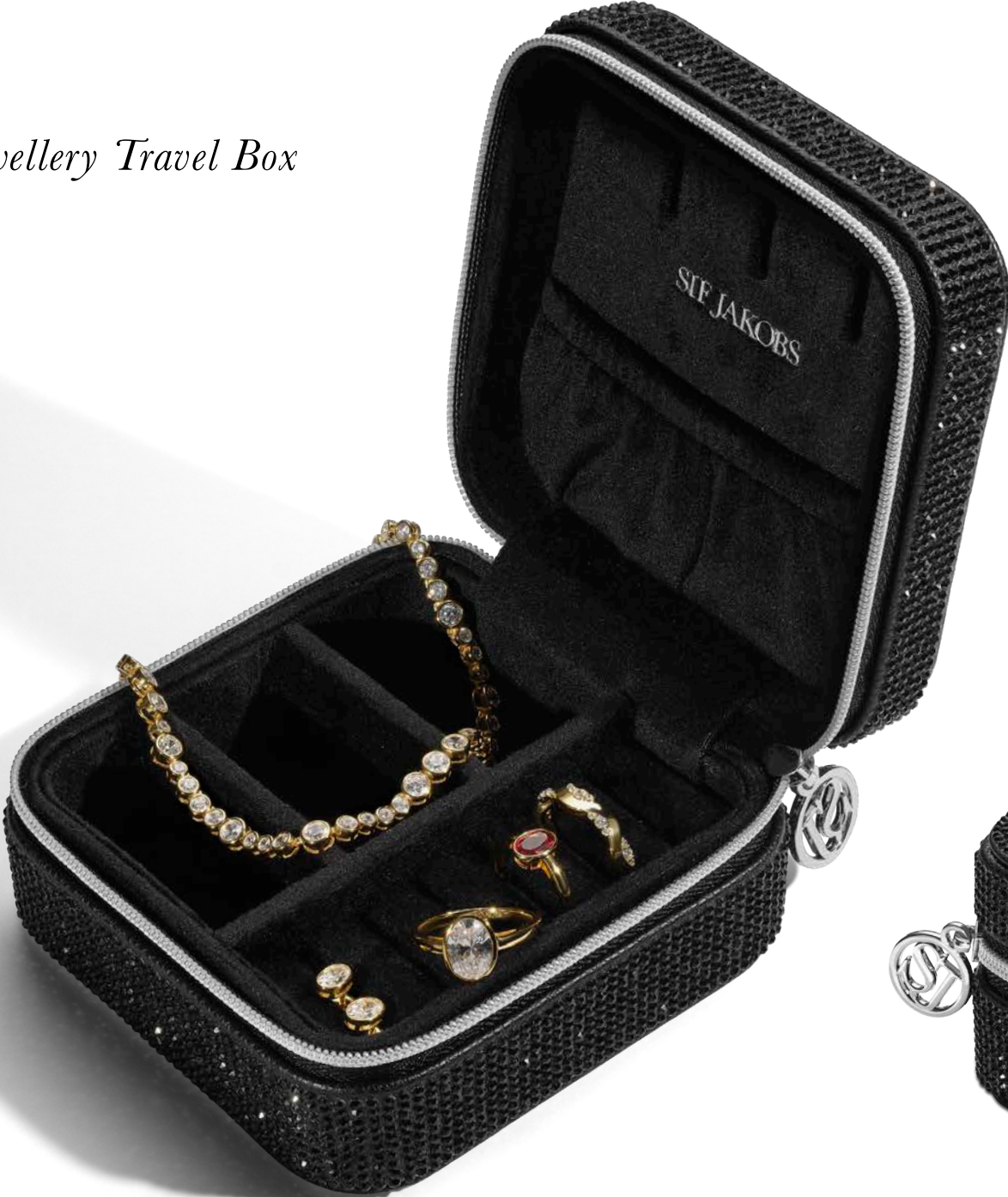
*Black Tote Bag with Silky straps*

Cosmetic bags made of soft velvet material with a silver zipper.



Nail file with a chic black glitter top for a touch of sparkle.

*Sparkling Jewellery Travel Box*





LET YOURSELF SHINE